

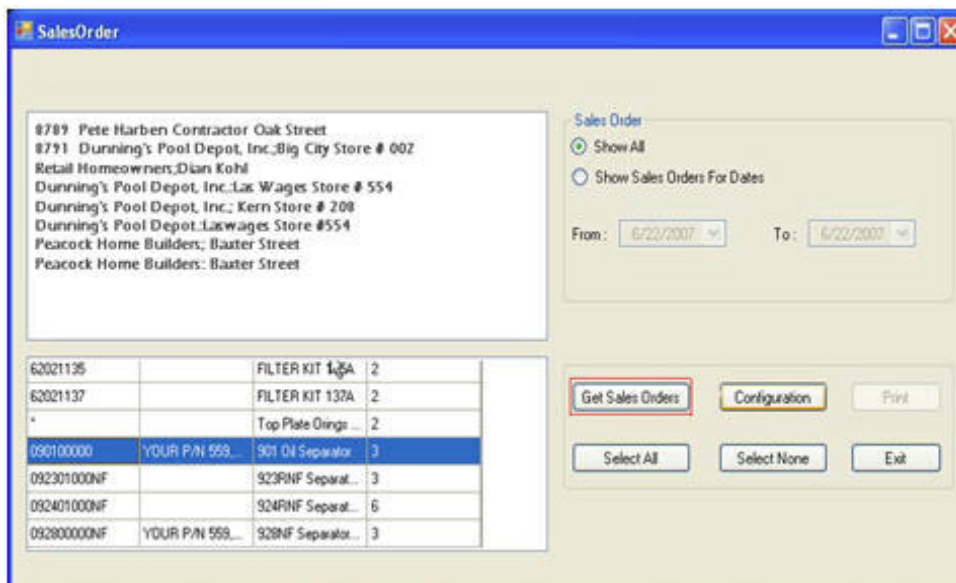


Macola Label Connector

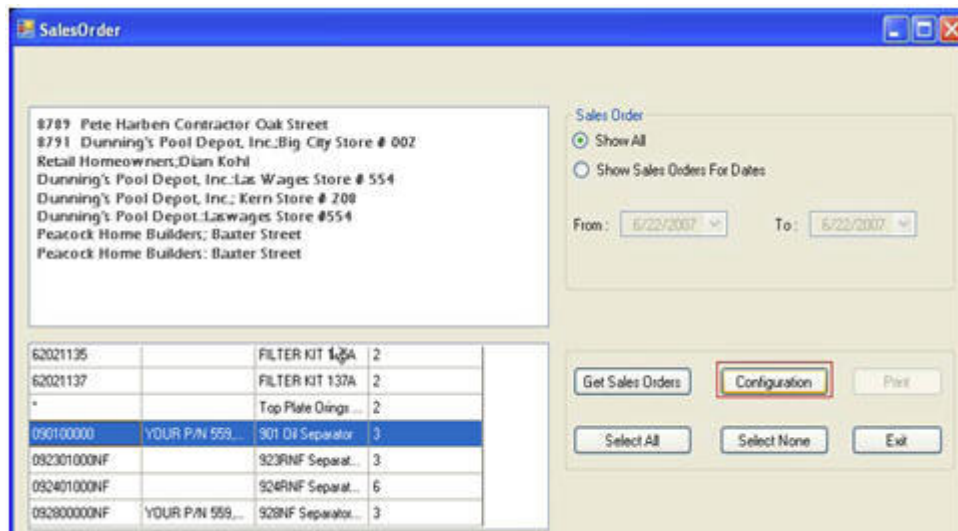
- Filters Macola Sales orders.
- Opens orders and presents items.
- Allows selection of individual items on the order for printing Labels.
- Passes print job to Leading label design software from Bartender, and Labelview.
- XML-based receiving against purchase orders.
- Allows you to create limitless label designs for clients and print labels to their needs.

ACCUWARE's Macola Label Connector

Click on Get Sales Orders button to get connected to the company file. Configuration Settings for Printer and Labels.



Click on Configuration on the "Sales Order" screen to move on to the Configuration Settings screen



Introduction

Accuware Inc. Announces integration with Macola, Bartender, and Labelview software. In our continuing effort to provide Advanced Barcode solutions for our Distribution and Manufacturing clients we have completed our solution for Barcode label production using the Latest Enterprise version of Macola. The solution also uses a "back end" label output engine with Seagull Scientific Bartender, and Teklynx Labelview Software. Users can operate the software from a browser. Software resides on your server or pc with Macola. The Desktop based solution controls everything from your central server or pc.

The solution

As the popularity for Macola software has matured many clients have graduated to the Enterprise version of Macola which has gained broad acceptance by many clients in the Small to Medium business size area's. In order to handle the many supply chain driven labeling requirements, many of our clients require the extended Label design capabilities of a real Label software solution. Bartender (by Seagull Scientific), and Labelview (from Teklynx), has long been a close partners with Accuware and have broad global reach in existing clients. Accuware has already provided many integrations to many other ERP solutions. We have decided to enhance the flexibility of our integration with Macola enterprise to allow for expansion into our Inventory management segment of our business. We will be adding modules to allow users to receive and manage materials with Mobile devices and push the data back into Macola.

How it works

Users operating Macola Pro, Premier, or Enterprise can create customer "Sales Orders". The Sales orders become "visible" to Accuware Label Automator. Users can search for Sales orders by date and select a Particular QuickBooks Sales Order. Once the Sales Order is selected the items that are associated with that Sales order are displayed. Users can then

print Labels for any of the items on that order. The Label print job is routed to Bartender or Labelview software. The Item name and information is used to pull up the correct Label design and print the appropriate amount of Labels. Users can select a setting to print one Label per item quantity or a multiplier. The Users get to make design changes using all the flexibility that Bartender or Labelview offer. No restrictions related to the limited design capability of printing within Macola

Accuware Incorporated provides Advance Labeling Solutions as well as Inventory control software to companies large and small. Accuware's browser based solutions make use of the latest in Microsoft's development technologies.